

# Legend

## URBAN STRUCTURE TYPES

### WITH HEAT STRESS IN 2050

- 01\_closed perimeter block development
- 02\_open perimeter block development
- 03\_line construction
- 04\_town center
- 05\_residential areas mean density
- 08\_higher houses with residential use
- 09\_areas with large structures
- 10\_business use
- 11\_industry

LINKED  
MEASURES

### NO HEAT STRESS UNTIL 2050

- Settlement structure
- Sensitive use
- Heat stress only daytime
- Heat stress only nighttime
- Areas with high heat stress (climate redevelopment necessary, §136 BauGB)

### POTENTIAL BY CHANGING URBAN STRUCTURES

- Potential by climate optimized build up
- Potential of climate optimized redensification
- Potential of climate optimized open spaces
- Construction ban on open spaces

## BENEFIT SYSTEM

### BENEFIT AREAS

- Areas with bioclimatic benefit
- Areas with bioclimatic benefit but limited use
- Areas with bioclimatic benefit\_forest

### CONNECTING SYSTEM

- Connecting system\_1. priority
- Connecting system\_2. priority
- Trees [Connecting system 1. priority]
- Shading with new additional trees [Connecting system 1. priority] / Mainly streets with N-S or NO-SW direction
- Trees [Connecting system 2. priority]
- Shading with new additional trees [Connecting system 2. priority] / Mainly streets with N-S or NO-SW direction
- New additional trees to produce connecting shadow ways in the quarters
- Greenery as microclimatic recreation zones
- Playgrounds and schoolyards as additional recreating zones
- Supplementary small recreation zones

### ADDITIONAL COMPONENTS AND POTENTIALS

- Playgrounds and schoolyards in the green network
- New installing of pocket-parks
- Protection of existing trees inside of building blocks
- Protection of demolition, unsealing and greenery inside of building blocks
- Looking for possibility of pocket-parks in business and industrial areas
- Connecting of open spaces

### WATER IN THE OPEN SPACE

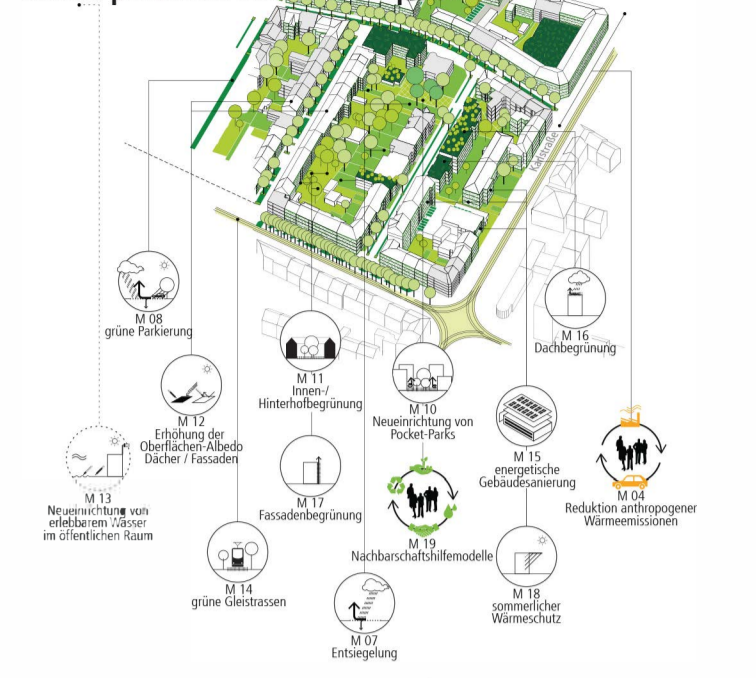
- Waterbodies
- Water playgrounds and fountains
- Looking for additional of usable waterbodies

## RELEVANT CLIMATIC FUNCTION

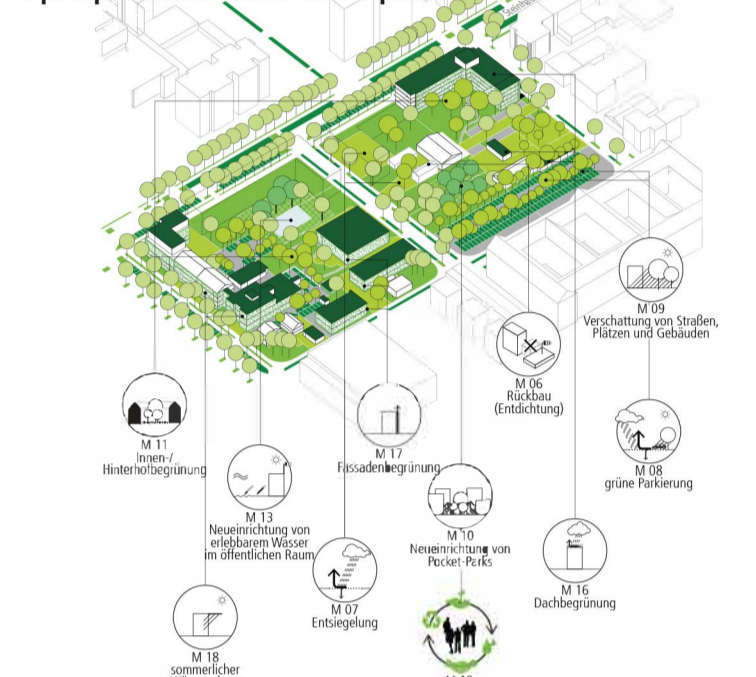
- Areas with benefit of cold air
- Local cold air path with benefit
- Regional cold air path with benefit
- Connecting to greater cold air production areas
- Cold air coming from open space
- Other open space

# Urban structure types

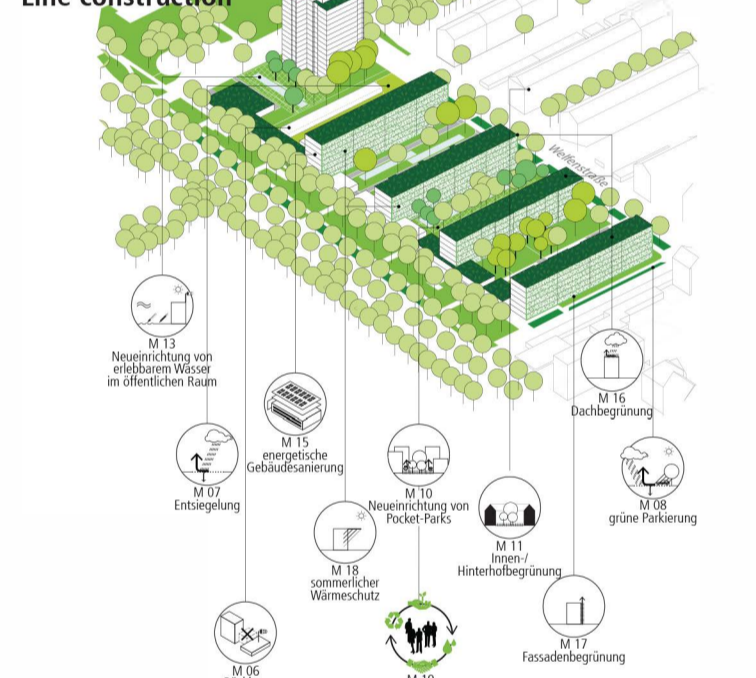
## 01 Closed perimeter block development



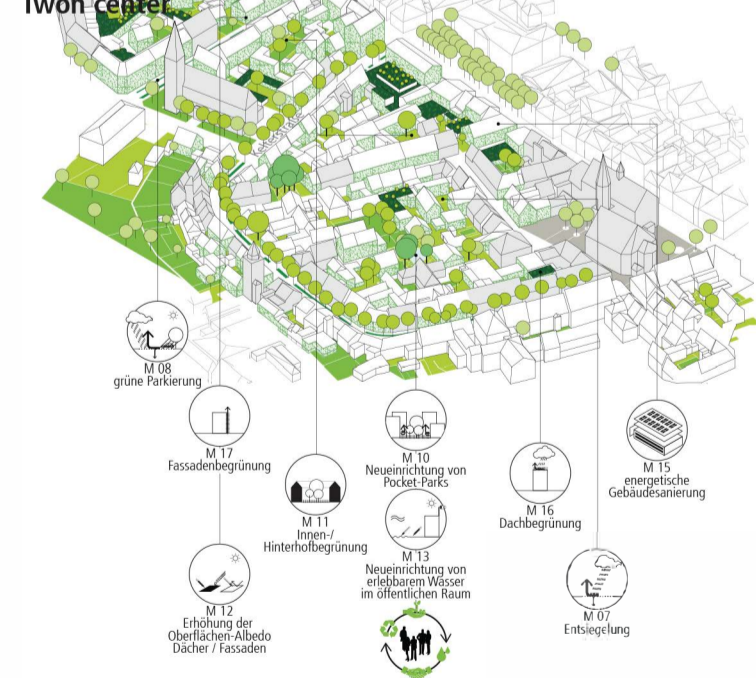
## 02 Open perimeter block development



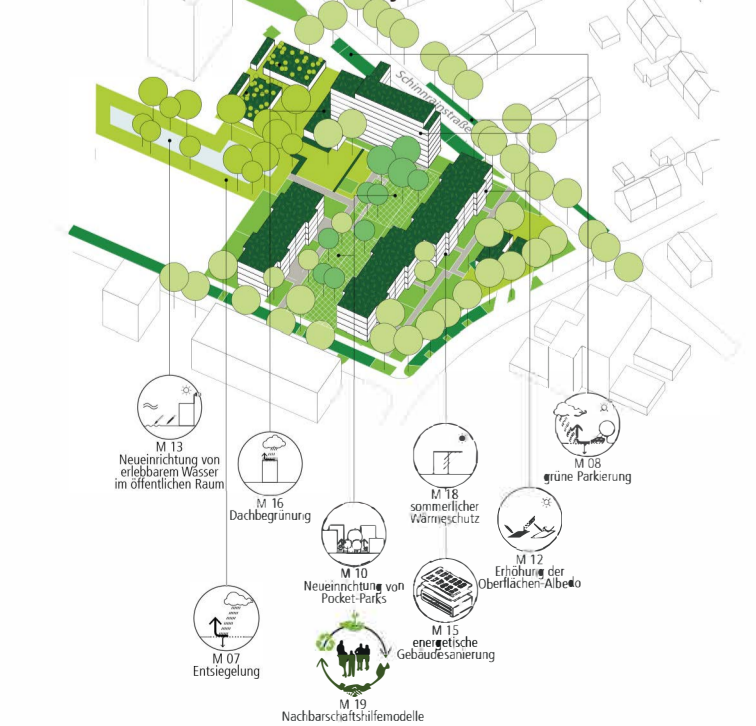
## 03 Line construction



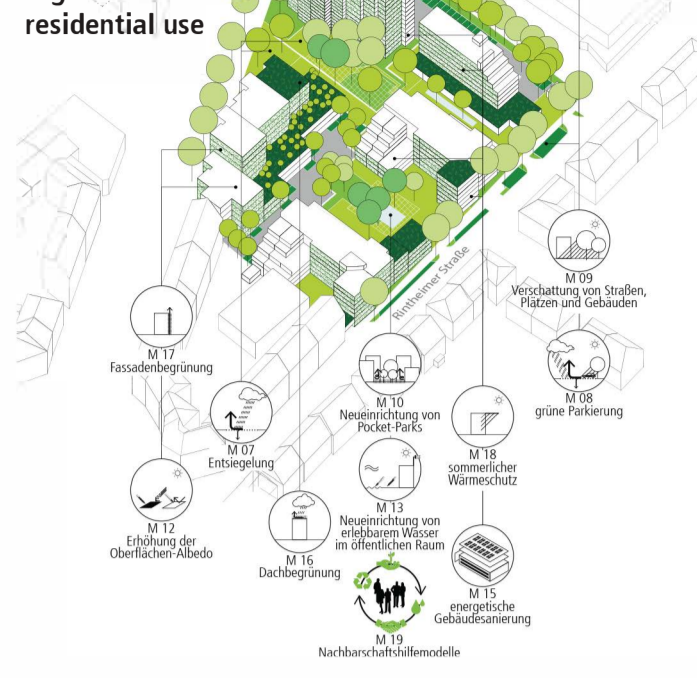
## 04 Town center



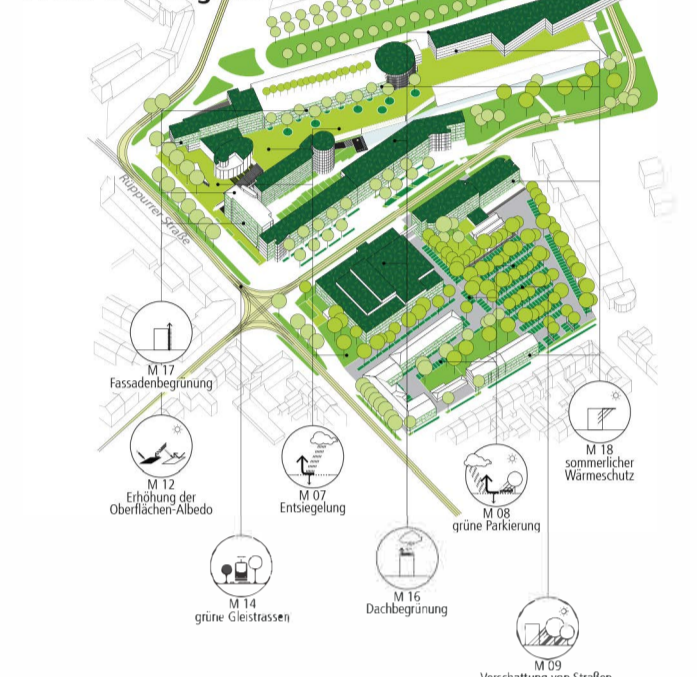
## 05 Residential areas mean density



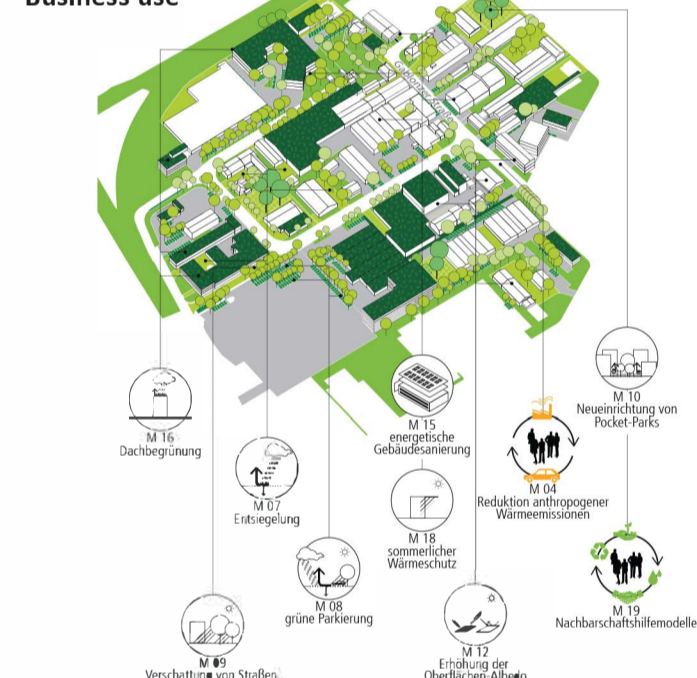
## 08 Higher houses with residential use



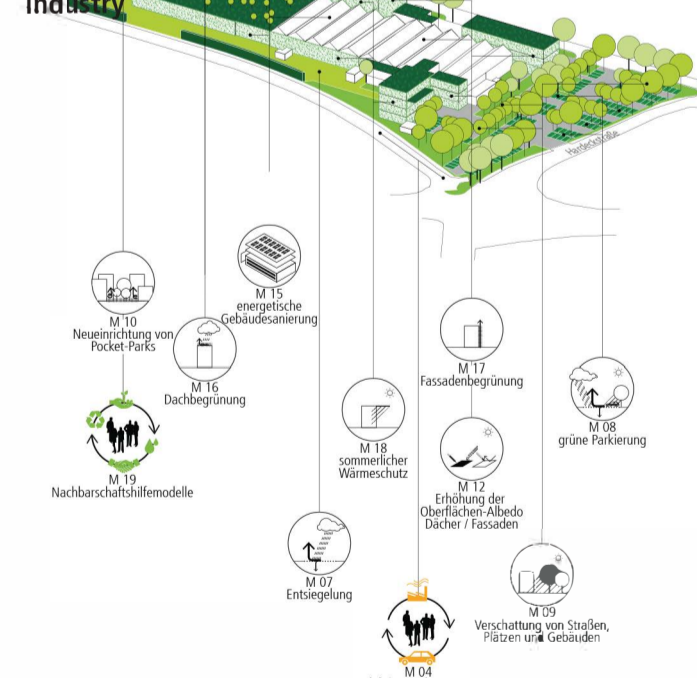
## 09 Areas with large structures



## 10 Business use



## 11 Industry



# Measures

## HIGHER LEVEL MEASURES

- M 01 Preservation and creation of cold air production areas and cold air paths
- M 02 Preservation and creation of large green areas (open space and forest)
- M 03 Connecting of open space (city parks) and larger green spaces
- M 04 Reduction of anthropogenic heat emissions
- M 05 Preservation and creation of open and flowing water areas

## LOCAL LEVEL MEASURES

- M 06 Demolition (decongestion)
- M 07 Unsealing
- M 08 Green parking and shading parking
- M 09 Shading of streets, places and buildings
- M 10 New installation of pocket-parks
- M 11 Greening of courtyards and backyards
- M 12 Increase of surface albedo (reflection)
- M 13 Installation of water areas in the open space (e.g. water playgrounds)
- M 14 Green tracks

## MEASURES ON BUILDINGS

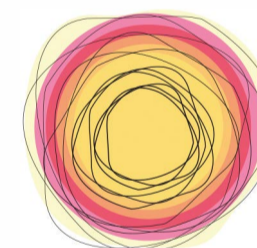
- M 15 Energy-related modernisation of building
- M 16 Roof greening
- M 17 Façade greening
- M 18 Summer thermal insulation of buildings

## SUPPLEMENTARY SOCIAL MEASURES

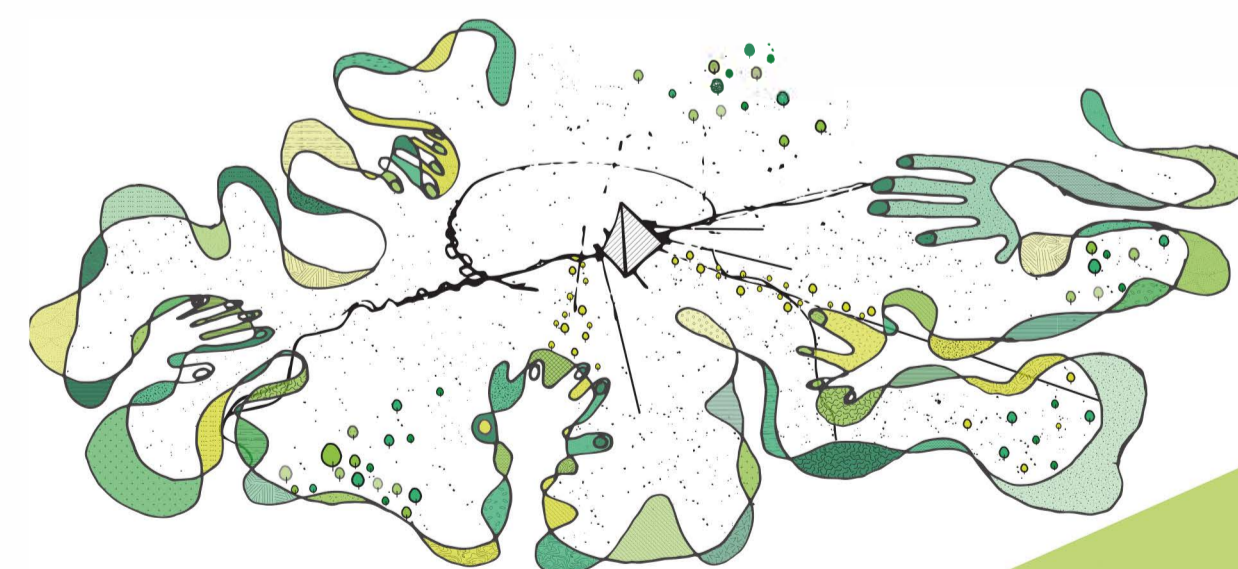
- M 19 Neighboring help projects



Stadtplanungsamt



# URBAN CLIMATIC FRAMEWORK PLAN HEAT



Karlsruhe  
Stadt Karlsruhe, Stadtplanungsamt  
Leitung: Prof. Dr. Anke Karmann-Woessner  
Bereich Generalplanung und Stadtplanung  
Leitung: Heike Dederer  
Projektleitung: Martin Kratz



Gefördert mit Mitteln des Ministeriums für Umwelt, Klima und Energiewirtschaft Baden-Württemberg (Umw) im Rahmen des Programms „Klimawandel und modifizierte Anpassung in Baden-Württemberg“ (KLIMOPASS)

Bearbeitung



info@geo-net.de  
www.geo-net.de

berchtoldkrass space&options  
Raumplaner, Stadtplaner, Partnerschaft  
mail@berchtoldkrass.de  
www.berchtoldkrass.de

Prof. Dr. Jürgen Baumüller, Stuttgart  
Prof. Dr. Günter Groß, Hannover



STADTGEBURTSTAG  
KARLSRUHE 2015

