

A 16-fold cultural experience



Badisches Landesmuseum Karlsruhe
Museum in der Majolika
Baden State Museum Karlsruhe
Majolica Museum

1



The museum records the history of the important Karlsruhe majolica manufacturing works from the time of its founding in 1901 to the recent past. Displaying art from the early beginnings (Hans



Thoma, Wilhelm Süs) to significant creations by Hermann Billing, Fritz Behn, and Max Laeuger, the spectrum also covers the major ceramics artists of the post-1945 period to the present day. The 1909 building which is set in the centre of the manufacturing works still in operation today is at a particularly attractive location. Guided tours, ceramics workshop.

Ahaweg 6
76131 Karlsruhe
Tel. 0049-(0)721/926-6583
Fax 0049-(0)721/926-6537
info@landesmuseum.de
www.landesmuseum.de

Opening hours
Tue–Sun 10 a.m. – 1 p.m.
and 2 p.m. – 5 p.m.

Trams from the main
railway station
Lines 2, 4, S1, S11 to
Ⓜ Europaplatz
then Bus 73 to
Ⓜ Linkenheimer Tor



Fritz Behn: "The dancer Nijinsky", around 1912

August Schädler: "Faun child with pan-pipes", 1910

Badisches Landesmuseum Karlsruhe
Schloss Karlsruhe
Baden State Museum Karlsruhe
Karlsruhe Palace

2



The Baden State Museum is the largest museum of cultural history in Baden. The collections in the Karlsruhe Palace show the region's pre- and early history, Mediterranean cultures of classic antiquity, as well as art, culture, and regional history from the Middle Ages to the present day. There are remarkable displays of Baden-Württemberg's prime collection of antiques, the famous "Turkish spoils of war", and a modern presentation of the palace's history. Several exhibitions every year. A museum festival with a different theme every other summer, an extensive range of museum-related educational services, a unique panorama from the palace tower.



"Roman villa", modern presentation of antique sculptures

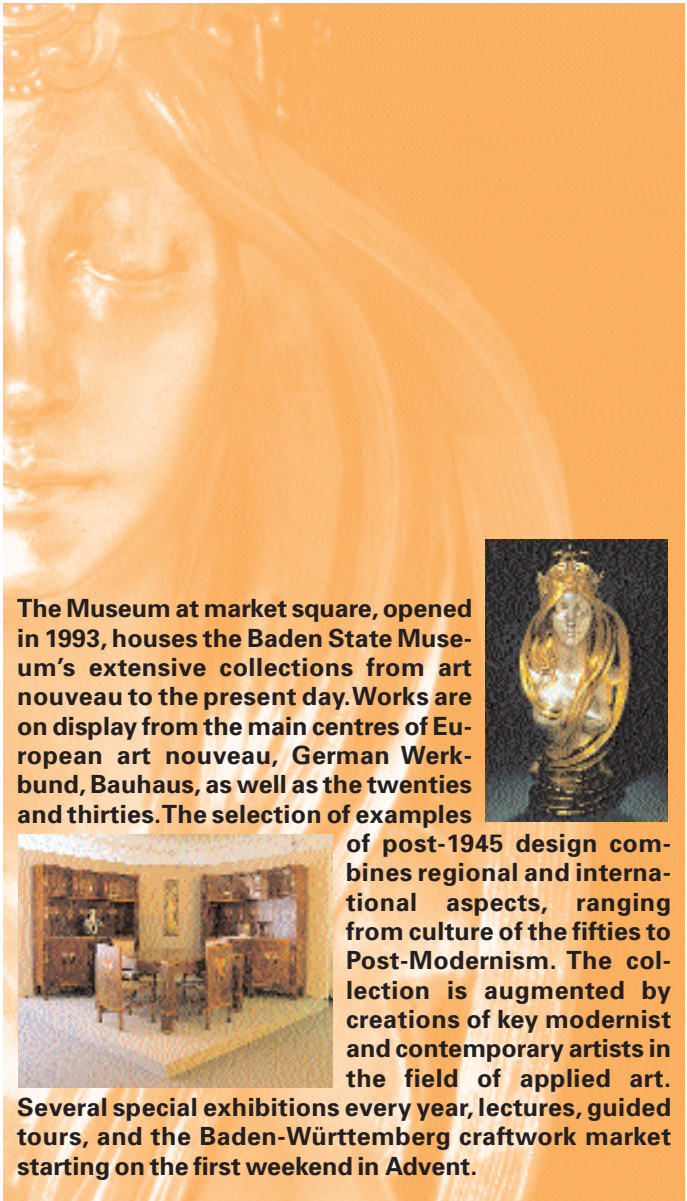
Palace
76131 Karlsruhe
Tel. 0049-(0)721/926-6514
Fax 0049-(0)721/926-6537
info@landesmuseum.de
www.landesmuseum.de

Opening hours
Tue–Thu 10 a.m. – 5 p.m.
Fri–Sun 10 a.m. – 6 p.m.

Trams from the main railway station
Lines 2, S1, S11, S4 to  Marktplatz (Market Square)



Badisches Landesmuseum Karlsruhe
Museum beim Markt
Baden State Museum Karlsruhe
Museum at market square



The Museum at market square, opened in 1993, houses the Baden State Museum's extensive collections from art nouveau to the present day. Works are on display from the main centres of European art nouveau, German Werkbund, Bauhaus, as well as the twenties and thirties. The selection of examples



Alfons Mucha: »La Nature«, Paris, 1899



Koloman Moser: Dining room, 1904

of post-1945 design combines regional and international aspects, ranging from culture of the fifties to Post-Modernism. The collection is augmented by creations of key modernist and contemporary artists in the field of applied art.

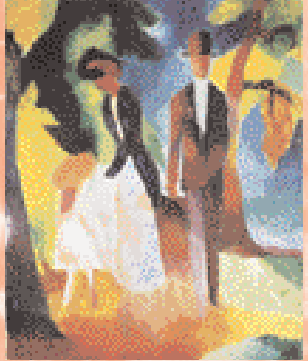
Several special exhibitions every year, lectures, guided tours, and the Baden-Württemberg craftwork market starting on the first weekend in Advent.

Karl-Friedrich-Straße 6
76133 Karlsruhe
Tel. 0049-(0)721/926-6578
Fax 0049-(0)721/926-6537
info@landesmuseum.de
www.landesmuseum.de

Opening hours
Tue–Thu 11 a.m.–5 p.m.
Fri–Sun 10 a.m.–6 p.m.

Trams from the main railway station
Lines 2, S1, S11, S4
to  Marktplatz
(Market Square)





August Macke: "People at the blue lake", 1913

The State Art Gallery in Karlsruhe is one of the Federal Republic's oldest and most important museums. The focus of its collection, spanning eight hundred years of art, lies on German, French and Dutch painting. 800 works are permanently on display in the main building and the Orangerie – paintings by: Grünewald, Hans Baldung Grien, Dürer, Rubens, Rembrandt, Jordaens, de Hooch, Ruisdael, Lorrain, Poussin, Lancret, Chardin, Boucher, Koch, Friedrich, Thoma, Delacroix, Manet, Courbet, Pissarro, Monet, Degas and Renoir, Gauguin, Cézanne, Matisse, Léger, Delaunay, Heckel, Kirchner, Kandinsky, Macke, Marc, Schwitters, Miro, Ernst, Dix, Beckmann, Wols, Dubuffet, Jorn, Arman, Rainer and Palermo. The gallery also possesses a department of prints and drawings from the 15th to 21st century (about 80,000 sheets) and one of Germany's largest museum libraries open to the public, containing more than 140,000 volumes. An exceptional attraction of this institution is one of the oldest German children's museums, located in the orangerie offering temporary exhibitions appealing to young visitors.



the oldest German children's museums, located in the orangerie offering temporary exhibitions appealing to young visitors.

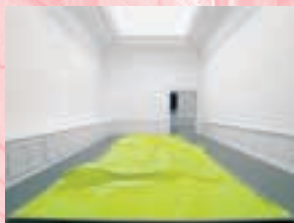
Hans-Thoma-Straße 2–6
76133 Karlsruhe
Tel. 0049-(0)721/926-3359
Fax 0049-(0)721/926-6788
info@kunsthalle-karlsruhe.de
www.kunsthalle-karlsruhe.de

Opening hours
Tue–Fri 10 a.m.–5 p.m.
Sat, Sun, bank holidays
10 a.m.–6 p.m.

Trams from the main
railway station
Lines 2, 4, S1, S11 to
Ⓜ Europaplatz and
Ⓜ Herrenstraße



The Baden Society of Art, founded in 1818, is the second oldest art society in Germany. At the beginning of the 21st century more than 1,400 members are providing their support in communicating and promoting contemporary art. The Baden Society of Art has been housed in a purpose-built building in the heart of the city since 1900. Here, 1000 m² on three floors are available for displaying exhibits. With up to ten alternating exhibitions every year the art society provides information about the latest international and local developments in the fine arts. Publication of special catalogues prompts more in-depth discussion about individual artists and thematical context. The Baden Society of Art holds lectures, shows selected films, arranges guided tours, dicussions, talks with artists and organises inter-media cooperative ventures. Also available for reference in the foyer are current art magazines, new publications, and catalogues. The library on the top floor is open during office hours.



Setareh Shahbazi: »Oh, no, no ... – The Crystal Series«, 2004

Klaas Kloosterboer: »Ballast«, 2003

lected films, arranges guided tours, dicussions, talks with artists and organises inter-media cooperative ventures. Also available for reference in the foyer are current art magazines, new publications, and catalogues. The library on the top floor is open during office hours.

Waldstraße 3
76133 Karlsruhe
Tel. 0049-(0)721/28226
Fax 0049-(0)721/29773
info@badischer-kunstverein.de
www.badischer-kunstverein.de

Opening hours
Tue–Fri 11 a.m.–7 p.m.
Sat, Sun, bank holidays
11 a.m.–5 p.m.

Trams from the main
railway station
Lines 2, 4, S1, S11 to
Ⓜ Europaplatz
Ⓜ Herrenstraße



Goethe reading "Faust" to the Karlsruhe royal court, painting by F.A. Pecht, 1860



The Museum of Upper Rhine Literature presents the wide diversity of literary life in the Upper Rhine region. The opportunities

offered by today's new media complement exhibits such as manuscripts, first editions, letters, photographs and recordings. At the same time the permanent exhibition presents literature in an aesthetically appealing atmosphere, offering much more than simple showcases. Regularly alternating exhibitions are held in addition to the permanent display of works. Widening the scope of the collection is an extensive library with 6,000 selected volumes of Upper Rhine literature and the Scheffel archive, a collecting point for works by Joseph Victor von Scheffel and Upper Rhine literature.

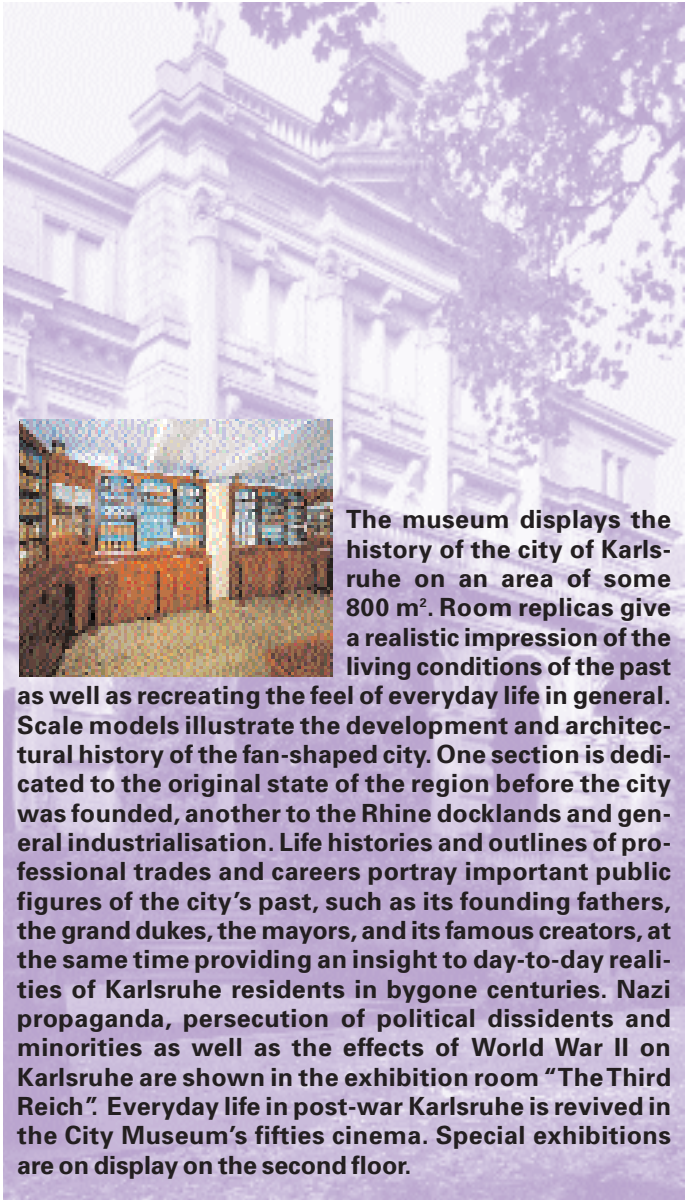


Prinz-Max-Palais, Karlstraße 10
76133 Karlsruhe
Tel. 0049-(0)721/133-4087
Fax 0049-(0)721/133-4089
info@literaturmuseum.de
www.literaturmuseum.de

Opening hours
Tue, Fri, Sun
10 a.m.–6 p.m.
Thu 10 a.m.–7 p.m.
Sat 2 p.m.–6 p.m.

Trams from the main
railway station
Lines 2, 4, S1, S11 to
Ⓜ Europaplatz





Interior of the municipal chemist's around 1820



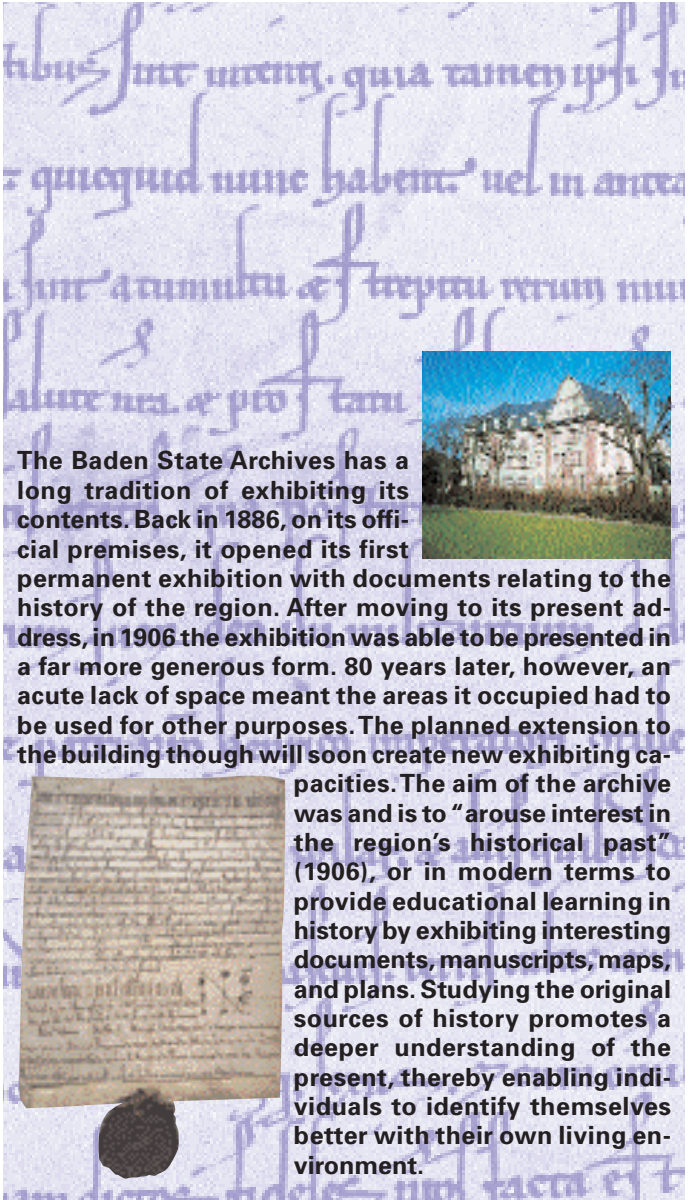
The museum displays the history of the city of Karlsruhe on an area of some 800 m². Room replicas give a realistic impression of the living conditions of the past as well as recreating the feel of everyday life in general. Scale models illustrate the development and architectural history of the fan-shaped city. One section is dedicated to the original state of the region before the city was founded, another to the Rhine docklands and general industrialisation. Life histories and outlines of professional trades and careers portray important public figures of the city's past, such as its founding fathers, the grand dukes, the mayors, and its famous creators, at the same time providing an insight to day-to-day realities of Karlsruhe residents in bygone centuries. Nazi propaganda, persecution of political dissidents and minorities as well as the effects of World War II on Karlsruhe are shown in the exhibition room "The Third Reich". Everyday life in post-war Karlsruhe is revived in the City Museum's fifties cinema. Special exhibitions are on display on the second floor.

Karlstraße 10
76124 Karlsruhe
Tel. 0049-(0)721/133-4230, -4231, -4234
Fax 0049-(0)721/133-42 39
stadtmuseum@karlsruhe.de
www4.karlsruhe.de/kultur/
stadtgeschichte/stadtmuseum.de

Opening hours
Tue, Fri, Sun
10 a.m.–6 p.m.
Sat 2 p.m.–6 p.m.
Thu 10 a.m.–7 p.m.

Trams from the
main railway
station Lines
2, 4, S1, S11 to
Ⓜ Europaplatz





The Baden State Archives has a long tradition of exhibiting its contents. Back in 1886, on its official premises, it opened its first permanent exhibition with documents relating to the history of the region. After moving to its present address, in 1906 the exhibition was able to be presented in a far more generous form. 80 years later, however, an acute lack of space meant the areas it occupied had to be used for other purposes. The planned extension to the building though will soon create new exhibiting capacities. The aim of the archive was and is to “arouse interest in the region’s historical past” (1906), or in modern terms to provide educational learning in history by exhibiting interesting documents, manuscripts, maps, and plans. Studying the original sources of history promotes a deeper understanding of the present, thereby enabling individuals to identify themselves better with their own living environment.



Nördliche Hildapromenade 2
76133 Karlsruhe
Tel. 0049-(0)721/926-2206
Fax 0049-(0)721/926-2231
glakarlsruhe@la-bw.de
www.landearchiv-bw.de/glak

Opening hours
Mon–Fri
8.30 a.m.–4.30 p.m.
Fri till 8 p.m.

Trams from the main
railway station
Lines 2, S1, S11 to
🚏 Mühlburger Tor



Friedrich II's letter of confirmation for the Salem monastery, 1213



The "Ständehaus", loosely translatable literally as "house of the trades and classes", built to commemorate the first German parliament building destroyed in an air raid in 1944, was opened in 1993 on the 175th anniversary of the decree of

the Baden constitution. Historical pictures of people and events, a model of the original building and a number of items including the contents of the original Baden "Ständehaus" foundation stone, illustrate the highlights of Baden parliamentary history. The multimedia information system, using films, texts, and photographic material, provides the opportunity to take a stroll through history from the decree of the Baden constitution in 1818 to the debate concerning the construction of the new "Ständehaus", now home to the memorial and the Municipal Library.

Ständehausstraße 2
76133 Karlsruhe
Tel. 0049-(0)721/133-4220
Fax 0049-(0)721/133-4299
archiv@karlsruhe.de
www1.karlsruhe.de/
Historie/Staendehaus

Opening hours
Tue, Thu 10 a.m.–7 p.m.
Wed, Fri 10 a.m.–6 p.m.
Sat 10 a.m.–2 p.m.

Trams from the main railway station
Lines 1, 3, 4, S1, S11, S2, S5 to
H Herrenstraße

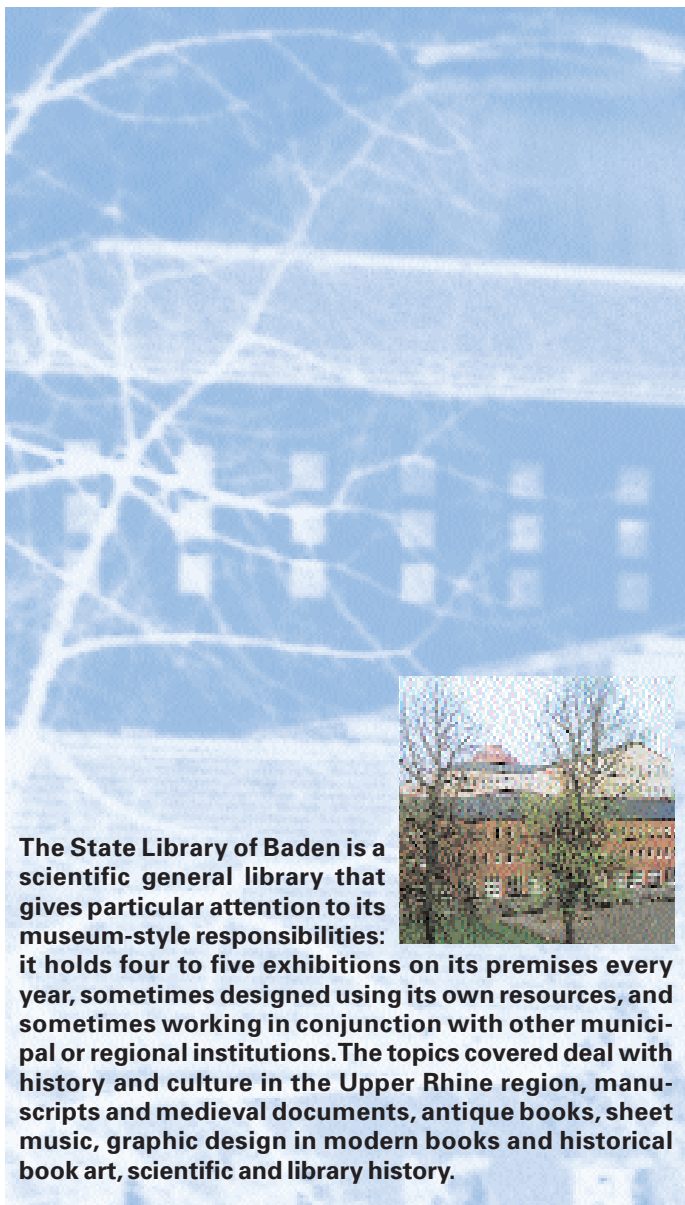


**„Das grösste Museum der Welt“
öffnet Ihnen die Türen!**

150 Museen - 3 Länder - 1 Pass

Mit dem Oberbayerischen Museums-Pass haben Sie ein Jahr lang freien Eintritt in über 150 Museen in Deutschland, Frankreich und der Schweiz.
Für alle Gäste unserer Region: Es gibt ihn auch als Kurzzeit-Pass, gültig 4 Tage innerhalb eines Monats.
Sonderausstellungen inbegriffen!
Erhältlich in allen besuchten Museen.

Info: **0781 707 83 32** oder
www.museumspass.com



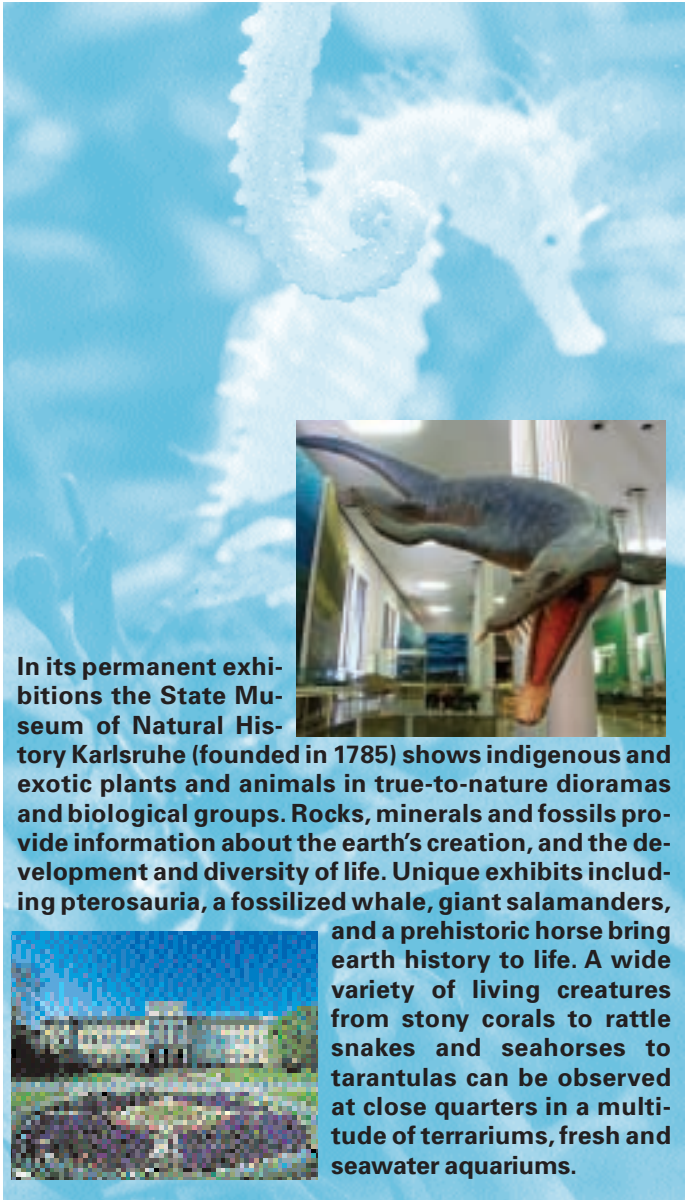
The State Library of Baden is a scientific general library that gives particular attention to its museum-style responsibilities: it holds four to five exhibitions on its premises every year, sometimes designed using its own resources, and sometimes working in conjunction with other municipal or regional institutions. The topics covered deal with history and culture in the Upper Rhine region, manuscripts and medieval documents, antique books, sheet music, graphic design in modern books and historical book art, scientific and library history.

Erbprinzenstraße 15
76133 Karlsruhe
Tel. 0049-(0)721/175-2201
Fax 0049-(0)721/175-2333
www.blb-karlsruhe.de

Opening hours
Mon–Fri 9 a.m.–6 p.m.
Sat 9.30 a.m.–12.30 p.m.

Trams from the main
railway station
Lines 4, S1, S11 to
H Herrenstraße





Nothosaurian

In its permanent exhibitions the State Museum of Natural History Karlsruhe (founded in 1785) shows indigenous and exotic plants and animals in true-to-nature dioramas and biological groups. Rocks, minerals and fossils provide information about the earth's creation, and the development and diversity of life. Unique exhibits including pterosauria, a fossilized whale, giant salamanders, and a prehistoric horse bring earth history to life. A wide variety of living creatures from stony corals to rattle snakes and seahorses to tarantulas can be observed at close quarters in a multitude of terrariums, fresh and seawater aquariums.



Erbprinzenstraße 13
76133 Karlsruhe
Tel. 0049-(0)721/175-2111
Fax 0049-(0)721/175-2110
museum@naturkundeka-bw.de
www.naturkundemuseum-
karlsruhe.de

Opening hours
Tue–Fri 9.30 a.m.–5 p.m.
Sat, Sun, bank holidays
10 a.m.–6 p.m.

Trams from the main
railway station
Lines 2, S1, S11, S4 to
📍 Marktplatz



In the exhibition "The Algorithmic Revolution," the ZKM | Media Museum explores the history and technical prerequisites of interactive art. Attention focuses on the fact that algorithms, that is, procedures for operations, now permeate all spheres of social life. The spectrum ranges from OpArt, kinetics, Arte programmata, Fluxus, and Happenings to modern software art, algorithmic NetArt, and the latest explorations of algorithmic literature and music. That PCs have spread so fast is not least due to computer games, which get progressively more complex; this again means that they require greater computing power. "World of Games' reloaded," a special laboratory on the second floor of the Media Museum, explores this genre's development – critically, but also playfully. The ground floor of the Media Museum is devoted to Masterpieces of Media Art from the ZKM_Collection. The ZKM_Collection, which was begun in 1989, has proved to be a model on which many later collections are based: for the first time, this collection accorded all art genres equal weight – painting, photography, sculpture, performance, video, computer. As a "Work in Progress," the Media Museum participates in developments from the ZKM's science institutes. Showcased here are current works that reflect on the status of science and art from the Institutes of Basic Research, Music and Acoustics, and Visual Media. Both "The Algorithmic Revolution" and "Masterpieces of Media Art from the ZKM_Collection" are permanent exhibitions that are updated at regular intervals.



ZKM-Cube, photo: ONUK © ZKM

Lorenzstraße 19
76135 Karlsruhe
Tel. 0049-(0)721/8100-1200
Fax 0049-(0)721/8100-1139
info@zkm.de
www.zkm.de

Opening hours
Wed–Fri 10 a.m.–6 p.m.
Sat, Sun 11 a.m.–6 p.m.

Trams from the main
railway station
Line 6 to
Ⓜ ZKM





Since December 1999, the ZKM | Museum of Contemporary Art is housed in Halls 1 and

2 of the former munitions factory and, since September 2004, it is the forum where all changing exhibitions and the theme-oriented presentation of works lent by private collectors are shown. In an area measuring more than 7000 square meters, artworks from the important private collections in Baden-Württemberg, FER, Froehlich, Grässlin, and Weishaupt, as well as the Boros Collection from Wuppertal, and other inter/national private collections are on display together with exhibits from the ZKM's own collection. Groundbreaking European and American artworks provide insights into the development of art from 1960 up to the present day. Special exhibitions based on individual collections illustrate various aspects of contemporary art. In addition, there are the main changing exhibitions with specific themes relating to socially relevant issues in art and media development.

Lorenzstraße 9
76135 Karlsruhe
Tel. 0049-(0)721/8100-1200
Fax 0049-(0)721/8100-1139
info@zkm.de
www.zkm.de

Opening hours
Wed–Fri
10 a.m.–6 p.m.
Sat, Sun 11 a.m.–6 p.m.

Trams from the main
railway station
Line 6 to
🚏 ZKM

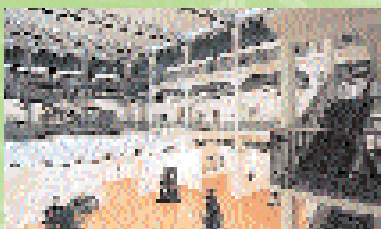


Jörg Immendorf: "For all the loved ones in the world", 1966, Garnatz collection



The city of Karlsruhe's art collections were given a home of their own for the first time with the opening of the Municipal Gallery in 1981 in the Prinz-MaxPalais. In 1997 the institution was subsequently moved to Lichthof 10 in the former industrial complex on Lorenzstraße, right next-door to the Center for Art and Media (ZKM) and

the State College of Design. The Municipal Gallery has over 2,700 m² of exhibition area at its disposal, spread over three floors. Located on the ground floor is the event forum and the area dedicated to special exhibitions. On display on the first and second floors is a selection of the most important works in municipal ownership and the Garnatz collection. Focal points of the works on show are examples of Baden art since the founding of the Karlsruhe Academy of Art (1854) and German art from 1945 to the present day. Augmenting the gallery's own exhibits is the top-flight collection of the Cologne couple Eberhard and Ute Garnatz, forming a highlight in its own right with key works of German painting, sculpture and photography from 1960 onwards. Several special exhibitions every year, guided tours, lectures, talks by artists, concerts, events for children and teenagers, a museum shop.



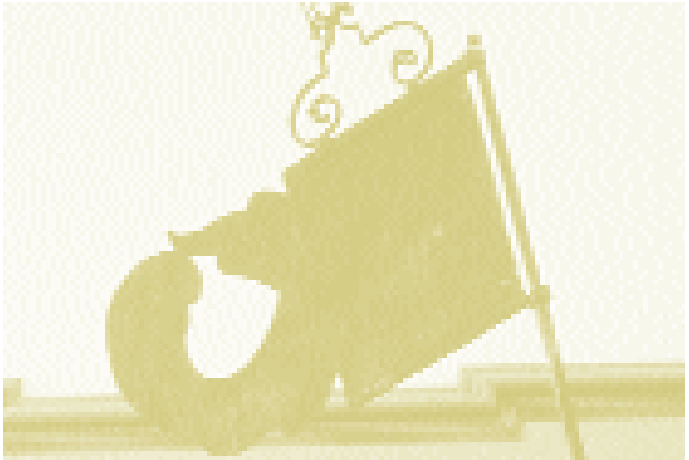
Lichthof 10. Foto: Artis

Lorenzstraße 27
76135 Karlsruhe
Tel. 0049-(0)721/133-4401, -4444
Fax 0049-(0)721/133-4409
staedtsche-galerie@karlsruhe.de
www.staedtsche-galerie.de

Opening hours
Wed–Fri
10 a.m.–6 p.m.
Sat, Sun
11 a.m.–6 p.m.

Trams from the main
railway station
Line 6 to
Ⓜ ZKM





The museum shows the history of the town of Durlach, independent until 1938, which dates back to its time as a Roman settlement. Durlach, founded by the Hohenstaufen dynasty, was the official residence of the margraval estate Baden-Durlach from 1565 to 1718, which developed into a centre of industry in the 19th century. The items on show cover art, cultural, social, and everyday history. The past of what is today Karlsruhe's largest district is brought to life by a model of the "Karlsburg" castle as it was before 1689, a model of the town around 1800, a large collection of 18th and early 19th century Durlach faience, abundant evidence of Durlach's earlier industrial undertakings, documents, paintings, and photographs. The Renaissance wing of the palace houses the "Steinsaal," or stone room, containing valuable gravestones. The historic roof, built in 1700, holds an exhibition of Durlach craft professions and the history of agriculture. Alternating exhibitions of the town's history are held several times a year.



Statue of a knight from the marketplace fountain of 1567

Karlsburg, Pfinztalstraße 9
76227 Karlsruhe
Tel. 0049-(0)721/133-4222, -4217
Fax 0049-(0)721/133-4299
archiv@kultur.karlsruhe.de
www4.karlsruhe.de/kultur/
stadtgeschichte/pfinzgaumuseum.de

Opening hours
Sat 2 p.m. to 5 p.m.
Sun 10 a.m. to 5 p.m.

Trams from Karlsruhe
main station or
Durlach railway
station Line 1 to
📍 Schlossplatz



The Carpathian German Museum illustrates the share the former Germans in Slovakia had in forming the country's contribution to Europe's cultural heritage until their expulsion in 1944/45. Specific focal points are given prominence in five rooms. Historical maps and a modern photographic documentary give an impression of what used to be the three German areas of settlement: Preßburg (Bratislava) and its environs, the "Hauerland" in central Slovakia, and the Zips (Spiš) in eastern Slovakia. Each of the settlement areas' special aspects are highlighted, such as wine-growing in the Preßburg region, mining in central Slovakia in a European context, and the mountaineering and winter sports tradition in the High Tatras. In addition to numerous pictorial representations, several large models of famous buildings, including the town hall of Leutschau (Levoča), are testimony of architectural achievements. Besides the folkloric collection (traditional costumes and household goods), also worthy of note is the evidence of the plastic arts, particularly the work of the famous master craftsman Paul von Leutschau, the complete works left by the painter Herta Ondrušová-Viktorin, items of craftwork, music, and literature. Important public figures and educational establishments are remembered as is the end of the war, combined with expulsion, camp life (portrayed by a documentary account well worth seeing), reconstruction, and new beginnings. A selection of unexhibited objects can be viewed on screen. An attractive museum guidebook is available at the museum counter. Guided group tours by prior arrangement. A library and an archive adjoining the museum are open for scientific work.



A vision of the Virgin Mary, relief panel from the high altar of Jacob's Church in Leutschau (Levoča), early 16th century (replica)

Karlsburg, Pfnztalstraße 9
76227 Karlsruhe
Tel. 0049-(0)721/133-4204, -4010
Fax 0049-(0)721/133-4009
karpatendeutsches-museum
@kultur-karlsruhe.de
www.karpatendeutsche.de

Opening hours
Sat 2 p.m.–5 p.m.
Sun 10 a.m.–5 p.m.

Trams from Karlsruhe
main station or
Durlach railway
station Line 1 to
🚏 Schlossplatz



Map

Design, typesetting: Jost, Holger, 3rd edition, Status: February 2005



- 1 Majolica Museum
- 2 Baden State Museum
- 3 Museum at market square
- 4 State Art Gallery
- 5 Baden Society of Art
- 6 Museum of Upper Rhine Literature
- 7 City Museum
- 8 Baden State Archives
- 9 "Ständehaus" commemorative building
- 10 State Library of Baden
- 11 State Museum of Natural History
- 12 ZKM | Media Museum
- 13 ZKM | Museum of Contemporary Art
- 14 Municipal Gallery
- 15 Pfinzgau Museum in Durlach
- 16 Carpathian German Museum

Parking guidance system

- N Zentrum Nord
- N (city centre North)
- N
- N
- N
- W Zentrum West
- W (city centre West)
- S Zentrum Süd
- S (city centre South)
- S

For other museums please refer to the brochure "Privately-owned museums"



www.karlsruhe.de/Kultur

Key

- Restaurant
- Cafe
- Museum shop
- Multi-storey car-park
- Suitable for wheelchairs
- Tram stop ("Haltestelle")

Upper Rhine Museum Pass
Free entry for holders
Tel. 0049-(0)761/707-8382
info@museumspass.com

Published by: City of Karlsruhe Cultural Affairs Office in conjunction with the Karlsruhe Office of Cultural Public Relations Work (AKÖ); Editor: Gabi Glutsch